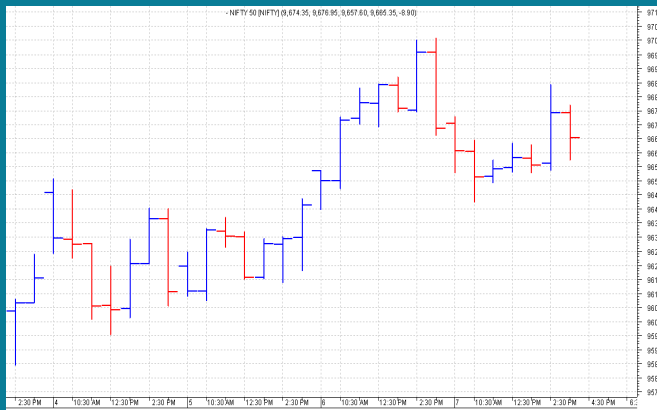


NIFTY: 9666 (-8)
WEEKLY CLOSE AT ALL TIME HIGH

SGX NIFTY: 9685 (+11)
MARKET COMMENTRY

Nifty closed at all time high level on Friday with a gain of 145 points on weekly basis. On daily basis it was almost a flat close.

Most of sector and thematic indices close closed flat on Friday.

Among them, Realty index with a gain of 1.77%, outperformed all. It was closely followed by Energy and Pharma indices with 1.44% and 1.31% gains each. On the other hand, with a fall of 0.6%, IT sector index underperformed all.

GENERAL TREND

HOURLY	DAILY	WEEKLY
UP	UP	UP

DEMAND AND SUPPLY LEVELS

INDEX	CLOSE	DEMAND LEVELS	SUPPLY LEVELS
NIFTY 50	9666	9653, 9642	9685, 9700
NIFTY BANK	23449	23400, 23370	23500, 23540

SECTOR INDICES PERFORMANCE

INDEX	CLOSE	% CHANGE
NIFTY REALTY	279.45	1.77
NIFTY ENERGY	12,055.75	1.44
NIFTY PHARMA	9,723.85	1.31
NIFTY MEDIA	3,037.60	0.51
NIFTY COMMODITIES	3,508.20	0.15
NIFTY INFRA	3,240.55	0.14
NIFTY BANK	23,449.15	-0.07
NIFTY AUTO	10,729.00	-0.16
NIFTY PVT BANK	13,096.55	-0.16
NIFTY METAL	3,087.75	-0.21
NIFTY CPSE	2,370.50	-0.21
NIFTY CONSUMPTION	4,415.85	-0.23
NIFTY PSU BANK	3,380.70	-0.31
NIFTY SERV SECTOR	12,435.50	-0.36
NIFTY FIN SERVICE	9,565.80	-0.42
NIFTY FMCG	27,465.85	-0.42
NIFTY IT	10,087.80	-0.60

COMMODITY

Base metals had a mixed week. On the other hand Gold and Silver witnessed huge selling last week. Gold prices felt down to 4 months low and Silver to yearly low levels.

Crude prices also witnessed selling and light crude closed at \$44.23 with a net weekly loss of \$1.81.

DISCLAIMER: This Document has been prepared by Baljit Securities Pvt Ltd. (Baljit Securities). The information and opinions contained herein have been compiled or arrived at, based upon information obtained from reliable sources. Such information has not been independently verified and no guaranty, representation of warranty, express or implied, is made as to its accuracy, completeness or correctness. All such information and opinions are subject to change without notice. Baljit Securities, its directors, analysts or employees do not take any responsibility, financial or otherwise, of the losses or the damages sustained due to the investments made or any action taken on basis of this report. Baljit Securities expressly disclaims any and all liabilities that may arise from information, errors or omissions in this connection. This document is not to be considered as an offer to sell or a solicitation to buy any securities. Baljit Securities and its directors, associates, employees may or may not have any positions in any of the stocks dealt in the report. This report is only for **PRIVATE CIRCULATION**.

Trend Help Desk

Contact : 033 – 40511113 / 114
Email : trend@baljitgroup.com

