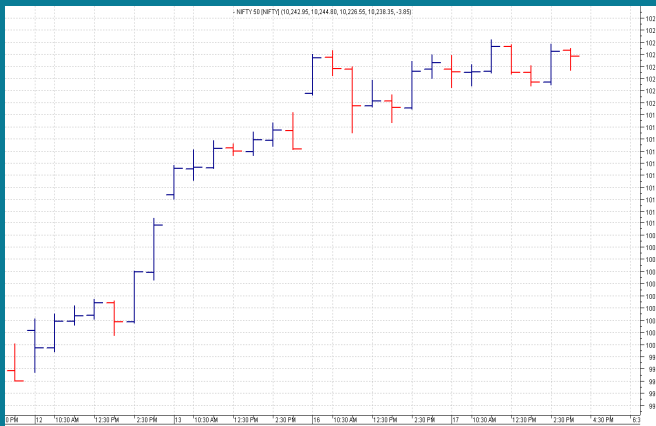


NIFTY: 10234 (+3)
RANGE BOUND AT NEW HIGH

SGX NIFTY: 10226 (-35)
MARKET COMMENTRY

Nifty made a new high of 10252 yesterday. Although it was a range bound session and a flat close. Nifty made a high of 10252 and low of 10212 during the day.

Majority of sector and thematic indices also settled flat yesterday. However, with a gain of 0.89%, Realty index outperformed and with a fall of 1.75%, Media under performed.

GENERAL TREND

| HOURLY | DAILY | WEEKLY |
|--------|-------|--------|
| UP | UP | UP |

DEMAND AND SUPPLY LEVELS

| INDEX | CLOSE | DEMAND LEVELS | SUPPLY LEVELS |
|------------|-------|---------------|---------------|
| NIFTY 50 | 10234 | 10212, 10180 | 10252 |
| NIFTY BANK | 24645 | 24572, 24520 | 24735, 24810 |

SECTOR INDICES PERFORMANCE

| INDEX | CLOSE | % CHANGE |
|-------------------|-----------|----------|
| NIFTY REALTY | 288.25 | 0.89 |
| NIFTY INFRA | 3,413.75 | 0.73 |
| NIFTY PHARMA | 9,740.55 | 0.50 |
| NIFTY CONSUMPTION | 4,620.75 | 0.45 |
| NIFTY COMMODITIES | 3,997.25 | 0.43 |
| NIFTY METAL | 3,868.15 | 0.33 |
| NIFTY ENERGY | 13,728.00 | 0.12 |
| NIFTY AUTO | 11,221.90 | 0.05 |
| NIFTY FMCG | 25,620.95 | 0.05 |
| NIFTY CPSE | 2,596.65 | 0.00 |
| NIFTY PSU BANK | 3,037.80 | -0.04 |
| NIFTY SERV SECTOR | 13,291.95 | -0.09 |
| NIFTY IT | 10,942.70 | -0.17 |
| NIFTY BANK | 24,645.60 | -0.23 |
| NIFTY PVT BANK | 13,971.90 | -0.23 |
| NIFTY FIN SERVICE | 10,133.85 | -0.27 |
| NIFTY MEDIA | 2,970.10 | -1.75 |

COMMODITY

Base Metals traded mixed yesterday also. Aluminum, copper and nickel settled flat whereas Lead and Zinc closed in red.

Gold and Silver traded with a negative bias and closed in red despite "Dhanteras". Crude traded range bound and settled flat.

DISCLAIMER: This Document has been prepared by Baljit Securities Pvt Ltd. (Baljit Securities). The information and opinions contained herein have been compiled or arrived at, based upon information obtained from reliable sources. Such information has not been independently verified and no guaranty, representation of warranty, express or implied, is made as to its accuracy, completeness or correctness. All such information and opinions are subject to change without notice. Baljit Securities, its directors, analysts or employees do not take any responsibility, financial or otherwise, of the losses or the damages sustained due to the investments made or any action taken on basis of this report. Baljit Securities expressly disclaims any and all liabilities that may arise from information, errors or omissions in this connection. This document is not to be considered as an offer to sell or a solicitation to buy any securities. Baljit Securities and its directors, associates, employees may or may not have any positions in any of the stocks dealt in the report. This report is only for **PRIVATE CIRCULATION**.

Trend Help Desk

Contact : 033 – 40511113 / 114
Email : trend@baljitgroup.com

