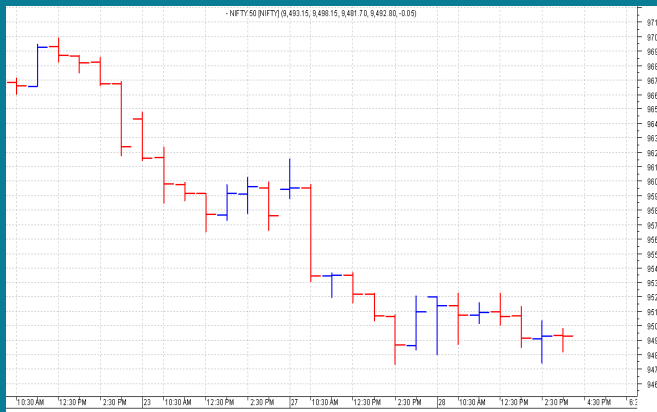


**NIFTY: 9491 (-20)**
**NEGATIVE BEFORE EXPIRY**

**SGX NIFTY: 9505 (+3)**
**MARKET COMMENTRY**

Nifty remain under pressure yesterday. It traded in red for most of the time and settled with a loss of 20 points. An intraday rally made a high of 9522 but it closed at 9491.

Sector and thematic indices traded mixed yesterday. Few closed in green, few in red and few settled flat. With a rise of 1.62%, Metal index outperformed and with a fall of 1.14%, Energy index underperformed the broad market.

**GENERAL TREND**

HOURLY	DAILY	WEEKLY
<b>DOWN</b>	<b>DOWN</b>	<b>DOWN</b>

**DEMAND AND SUPPLY LEVELS**

INDEX	CLOSE	DEMAND LEVELS	SUPPLY LEVELS
<b>NIFTY 50</b>	<b>9491</b>	<b>9475, 9380</b>	<b>9522, 9535</b>
<b>NIFTY BANK</b>	<b>23236</b>	<b>23145, 23050</b>	<b>23322, 23400</b>

### SECTOR INDICES PERFORMANCE

INDEX	CLOSE	% CHANGE
NIFTY METAL	2,931.75	1.62
NIFTY REALTY	262.10	0.79
NIFTY IT	10,133.55	0.64
NIFTY INFRA	3,200.55	0.51
NIFTY COMMODITIES	3,390.75	0.38
NIFTY PVT BANK	12,980.15	0.28
NIFTY PHARMA	9,482.35	0.15
NIFTY BANK	23,235.85	0.08
NIFTY AUTO	10,582.65	0.06
NIFTY SERV SECTOR	12,356.10	0.02
NIFTY FIN SERVICE	9,520.75	-0.19
NIFTY CONSUMPTION	4,308.30	-0.34
NIFTY CPSE	2,334.80	-0.34
NIFTY PSU BANK	3,306.80	-0.64
NIFTY MEDIA	2,933.95	-0.76
NIFTY FMCG	25,981.90	-0.79
NIFTY ENERGY	11,644.20	-1.14

### COMMODITY

Rally continued in base metals and all of them closed in green yesterday also. Silver prices also closed in green whereas Gold settled flat.

Crude prices witnessed rally for second consecutive session yesterday. Light crude closed at \$44.74 with a gain of \$0.50.

**DISCLAIMER:** This Document has been prepared by Baljit Securities Pvt Ltd. (Baljit Securities). The information and opinions contained herein have been compiled or arrived at, based upon information obtained from reliable sources. Such information has not been independently verified and no guaranty, representation of warranty, express or implied, is made as to its accuracy, completeness or correctness. All such information and opinions are subject to change without notice. Baljit Securities, its directors, analysts or employees do not take any responsibility, financial or otherwise, of the losses or the damages sustained due to the investments made or any action taken on basis of this report. Baljit Securities expressly disclaims any and all liabilities that may arise from information, errors or omissions in this connection. This document is not to be considered as an offer to sell or a solicitation to buy any securities. Baljit Securities and its directors, associates, employees may or may not have any positions in any of the stocks dealt in the report. This report is only for **PRIVATE CIRCULATION**.

#### Trend Help Desk

Contact : 033 – 40511113 / 114  
Email : trend@baljitgroup.com

