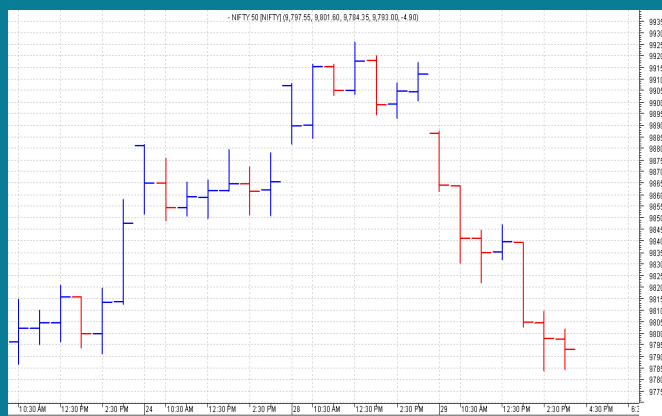


**NIFTY: 9796 (-116)**

## BACK TO 9800


**SGX NIFTY: 9910 (+34)**

## MARKET COMMENTRY

Nifty opened with a down side gap yesterday and felt down to 9783. It was a sustained downward move till end of the session. Nifty closed with a huge loss of 116 points.

Needless to say, all sector and thematic indices closed in red yesterday. With a loss of 1.65%, Energy index was the worst hit. It was closely followed by CPSE index with 1.52% loss. Infra, Service Sector, Pharma, PSU Banks, etc also closed in deep red.

## GENERAL TREND

HOURLY	DAILY	WEEKLY
<b>DOWN</b>	<b>SIDEWAYS</b>	<b>DOWN</b>

## DEMAND AND SUPPLY LEVELS

INDEX	CLOSE	DEMAND LEVELS	SUPPLY LEVELS
<b>NIFTY 50</b>	<b>9796</b>	<b>9775, 9740</b>	<b>9850, 9875</b>
<b>NIFTY BANK</b>	<b>24129</b>	<b>24000, 23900</b>	<b>24225, 24300</b>

### SECTOR INDICES PERFORMANCE

INDEX	CLOSE	% CHANGE
NIFTY ENERGY	12,749.05	-1.65
NIFTY CPSE	2,428.40	-1.52
NIFTY INFRA	3,288.35	-1.37
NIFTY SERV SECTOR	12,924.15	-1.25
NIFTY PHARMA	8,865.05	-1.23
NIFTY PSU BANK	3,279.95	-1.20
NIFTY FIN SERVICE	9,976.65	-1.19
NIFTY COMMODITIES	3,734.20	-1.19
NIFTY METAL	3,388.55	-1.11
NIFTY PVT BANK	13,542.50	-1.03
NIFTY BANK	24,128.95	-1.02
NIFTY FMCG	25,529.50	-0.90
NIFTY REALTY	272.05	-0.89
NIFTY AUTO	10,503.50	-0.84
NIFTY IT	10,505.95	-0.81
NIFTY CONSUMPTION	4,457.20	-0.80
NIFTY MEDIA	2,942.30	-0.43

### COMMODITY

Base metals traded with positive bias yesterday. Gold and Silver prices witnessed smart rally for second successive session yesterday and both closed at new highs.

On the other hand, crude prices remain weak and light crude closed at \$46.44 with a loss of \$0.13.

**DISCLAIMER:** This Document has been prepared by Baljit Securities Pvt Ltd. (Baljit Securities). The information and opinions contained herein have been compiled or arrived at, based upon information obtained from reliable sources. Such information has not been independently verified and no guaranty, representation of warranty, express or implied, is made as to its accuracy, completeness or correctness. All such information and opinions are subject to change without notice. Baljit Securities, its directors, analysts or employees do not take any responsibility, financial or otherwise, of the losses or the damages sustained due to the investments made or any action taken on basis of this report. Baljit Securities expressly disclaims any and all liabilities that may arise from information, errors or omissions in this connection. This document is not to be considered as an offer to sell or a solicitation to buy any securities. Baljit Securities and its directors, associates, employees may or may not have any positions in any of the stocks dealt in the report. This report is only for **PRIVATE CIRCULATION**.

#### Trend Help Desk

Contact : 033 – 40511113 / 114  
Email : trend@baljitgroup.com

