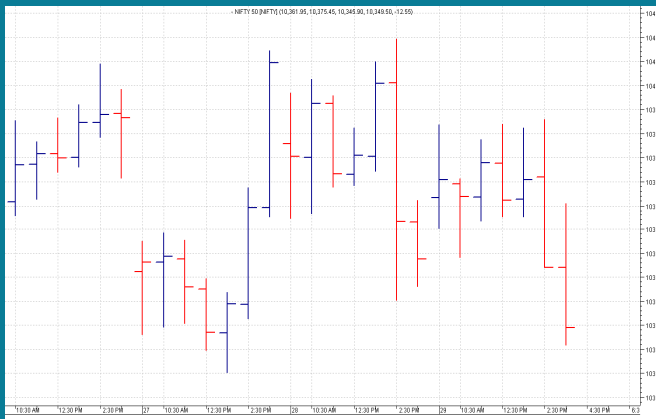


**NIFTY: 10361 (-9)**
**RANGE BOUND BEFORE EXPIRY**

**SGX NIFTY: 10308 (-51)**
**MARKET COMMENTRY**

Nifty traded range bound with a for second consecutive session yesterday. It made a high of 10393 & low of 10346 before settling flat at 10361 with a net loss of 9 points.

In tandem with broad indices, all Sector and thematic indices also settled flat. However, with a rise of 0.89%, Realty index outperformed and with a loss of 0.93%, PSU Bank index underperformed.

**GENERAL TREND**

HOURLY	DAILY	WEEKLY
DOWN	SIDEWAYS	UP

**DEMAND AND SUPPLY LEVELS**

INDEX	CLOSE	DEMAND LEVELS	SUPPLY LEVELS
<b>NIFTY 50</b>	<b>10361</b>	<b>10340, 10305</b>	<b>10393, 10410</b>
<b>NIFTY BANK</b>	<b>25795</b>	<b>25700, 25620</b>	<b>25877, 25953</b>

## SECTOR INDICES PERFORMANCE

INDEX	CLOSE	% CHANGE
NIFTY PSU BANK	3,947.80	-0.93
NIFTY MEDIA	3,346.90	-0.41
NIFTY METAL	3,721.90	-0.37
NIFTY IT	11,232.90	-0.33
NIFTY FIN SERVICE	10,515.55	-0.28
NIFTY SERV SECTOR	13,645.05	-0.27
NIFTY BANK	25,795.70	-0.20
NIFTY COMMODITIES	3,972.05	-0.19
NIFTY PVT BANK	14,183.95	-0.15
NIFTY CONSUMPTION	4,860.30	-0.03
NIFTY FMCG	25,972.85	0.14
NIFTY ENERGY	14,343.45	0.17
NIFTY AUTO	11,427.95	0.19
NIFTY INFRA	3,534.45	0.30
NIFTY PHARMA	9,351.85	0.36
NIFTY CPSE	2,637.75	0.41
NIFTY REALTY	322.00	0.89

## COMMODITY

Base metals traded mixed yesterday. Aluminum and Copper prices continues to fall and closed in deep red whereas Lead, Nickel and Zinc prices settled flat. Precious metal prices also felt down substantially and Silver closed at 4 months low.

Crude prices remain under pressure and Light Crude settled in red yesterday.

**DISCLAIMER:** This Document has been prepared by Baljit Securities Pvt Ltd. (Baljit Securities). The information and opinions contained herein have been compiled or arrived at, based upon information obtained from reliable sources. Such information has not been independently verified and no guaranty, representation of warranty, express or implied, is made as to its accuracy, completeness or correctness. All such information and opinions are subject to change without notice. Baljit Securities, its directors, analysts or employees do not take any responsibility, financial or otherwise, of the losses or the damages sustained due to the investments made or any action taken on basis of this report. Baljit Securities expressly disclaims any and all liabilities that may arise from information, errors or omissions in this connection. This document is not to be considered as an offer to sell or a solicitation to buy any securities. Baljit Securities and its directors, associates, employees may or may not have any positions in any of the stocks dealt in the report. This report is only for **PRIVATE CIRCULATION**.

### Trend Help Desk

Contact : 033 – 40511113 / 114  
Email : trend@baljitgroup.com

